

UNITED STATES SECURITIES AND EXCHANGE COMMISSION
Washington, D.C. 20549

FORM 8-K

CURRENT REPORT
Pursuant to Section 13 or 15(d) of the Securities Exchange Act of 1934

Date of Report (Date of earliest event reported): September 5, 2017

Reign Sapphire Corporation
(State or other jurisdiction of incorporation)

Delaware
(State or other jurisdiction
of incorporation)

333-204486
(Commission file Number)

47-2573116
(IRS Employer
Identification No.)

9465 Wilshire Boulevard, Beverly Hills, CA
(Address of principal executive offices)

90212
(Zip Code)

Registrant's telephone number, including area code: **(213) 457-3772**

(Former name or former address, if changed since last report.)

Check the appropriate box below if the Form 8-K filing is intended to simultaneously satisfy the filing obligation of the registrant under any of the following provisions:

- Written communications pursuant to Rule 425 under the Securities Act (17 CFR 230.425)
- Soliciting material pursuant to Rule 14a-12 under the Exchange Act (17 CFR 240.14a-12)
- Pre-commencement communications pursuant to Rule 14d-2(b) under the Exchange Act (17 CFR 240.14d-2(b))

Indicate by check mark whether the registrant is an emerging growth company as defined in Rule 405 of the Securities Act of 1933 (§230.405 of this chapter) or Rule 12b-2 of the Securities Exchange Act of 1934 (§240.12b-2 of this chapter).

Emerging growth company

If an emerging growth company, indicate by check mark if the registrant has elected not to use the extended transition period for complying with any new or revised financial accounting standards provided pursuant to Section 13(a) of the Exchange Act.

Item 7.01 Regulation FD Disclosure.

On September 5, 2017, Reign Sapphire Corporation, (the "Company") posted presentation material on its corporate website. The written material is attached hereto as Exhibit 99.1, and is hereby incorporated by reference solely for purposes of this Item 7.01 disclosure.

Exhibit 99.1 contains forward-looking statements. These forward-looking statements are not guarantees of future performance and involve risks, uncertainties and assumptions that are difficult to predict. Forward-looking statements are based upon assumptions as to future events that may not prove to be accurate. Actual outcomes and results may differ materially from what is expressed in these forward-looking statements.

Item 9.01 Financial Statements and Exhibits.

(d) Exhibits.

In reviewing the agreements included or incorporated by reference as exhibits to this Current Report on Form 8-K, please remember that they are included to provide you with information regarding their terms and are not intended to provide any other factual or disclosure about the Company or the other parties to the agreements. The agreements may contain representations and warranties by each of the parties to the applicable agreement. These representations and warranties have been made solely for the benefit of the parties to the applicable agreement and accordingly, these representations and warranties may not describe the actual state of affairs as of the date they were made or at any other time. Additional information about the Company may be found elsewhere in this Current Report on Form 8-K and in our other public filings, which are available without charge through the SEC's website at <http://www.sec.gov>.

Exhibit Number	Description
99.1	Presentation material as posted on the Company's corporate website on September 5, 2017.

SIGNATURES

Pursuant to the requirements of the Securities Exchange Act of 1934, the registrant has duly caused this report to be signed on its behalf by the undersigned hereunto duly authorized.

REIGN SAPPHIRE CORPORATION

Date: September 5, 2017

By: /s/ Joseph Segelman
Joseph Segelman, Chief Executive Officer

REIGN

SAPPHIRE CORPORATION



INVESTOR
DECK
September 2017



Forward Looking Statement

The purpose of this presentation is to provide an update on the business of Reign Sapphire Corporation, a Delaware corporation ("RSC", "Reign" or "RGNP"). These slides have been prepared as a presentation aid only and the information they contain may require further explanation and/or clarification. Accordingly, these slides and the information they contain should be read in conjunction with past and future announcements by Reign and should not be relied upon as an independent source of information. Please contact Reign for further information.

This presentation contains "forward-looking statements" within the meaning of the U.S. federal securities laws, which statements may include information regarding the plans, intentions, expectations, future financial performance, or future operating performance of Reign. Forward-looking statements are based on the expectations, estimates, or projections of management as of the date of this presentation. Although Reign's management believes these expectations, estimates, or projections to be reasonable as of the date of this presentation, forward-looking statements are inherently subject to significant business risks, economic and competitive uncertainties, or other contingencies, which could cause its actual results or performance to differ materially from what may be expressed or implied in the forward-looking statements. These statements, which express Reign management's current views concerning future events or results, are subject to inherent risks and uncertainties. Important factors that could cause Reign's actual results or performance to differ materially from the forward-looking statements include those set forth in the "Risk Factors" section in the Reign registration statement on Form S-1 on file with the Securities and Exchange Commission at www.sec.gov. Reign disclaims any intention or obligation to update or revise any forward-looking statements to reflect subsequent events and circumstances, except to the extent required by applicable law and you are urged to view all forward-looking statements contained in this presentation with caution.

Certain of the information in this presentation have been derived from publicly available sources that have not been independently verified. No representation or warranty is made as to the accuracy, completeness or reliability of the information.

This presentation should not be relied on as a recommendation or forecast by Reign. Nothing in this presentation should be construed as either an offer to sell or a solicitation of an offer to buy or sell shares of Reign in any jurisdiction.

Reign Sapphire Corporation

Ticker	RGNP
Founded	December 2014
Headquarters:	Los Angeles, California
Employees:	10
Legal Counsel	Bart & Associates
Auditor	Hall & Company
Share Outstanding	49,171,310
Float	4,085,000

3 distinct, niche, direct-to-consumer jewelry brands sharing central marketing and operational infrastructure

Reign Sapphires, Coordinates Collection & LeBloc Jewelry

Custom Branded Jewelry

- Sustainably sourced
- Made in USA
- Personalized & made to order

Lean Operating Model

- Sales & Marketing Organization
- Just-in-time inventory strategy
- Scalable manufacturing capacity
- Tech & Data Driven

REIGN



The Reign Mission

Ethical and sustainable jewelry
marketed through sophisticated digital
initiatives direct to consumer

REIGN

Reign Brands

REIGN
SAPPHIRES

Conflict free Australian Sapphires
Jewelry

Aspirational luxury with clean,
timeless, classic styles

COORDINATES °
COLLECTION

Life's biggest moments fixed in time

Engraved location coordinates



LE BLOC

Say it in Bloc

Bracelets, necklaces, rings featuring
your favorite letters and words

REIGN

Lean Operating Model

Reign's sales model builds and ships finished goods quickly

Direct to consumer

Low inventory
Made to order

Reign's sourcing model keeps expenses linked to order flow

Just in Time Delivery

Raw material expenses based only on current order volume
No long duration commodity risk

Production is variable based on demand

Flexible production scheduling

Capacity scalable 250% without increasing overhead



REIGN

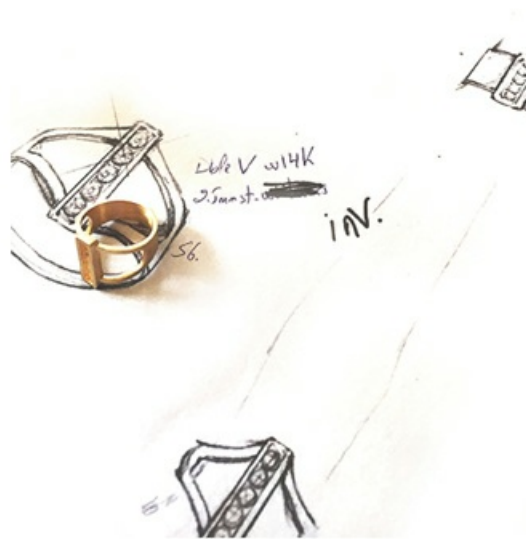
Ethical Sourcing

Reign's customers value products that they can wear proudly from a company that shares their beliefs in human dignity and environmental stewardship

Member, American Gem Trading Association committed to fair trade and processing of gemstones

Supplier audits, inspections, spot checks

Processing in the USA and Asia



REIGN

US Jewelry Market



Source: IBIS World December 2015

REIGN

Reign Personalized Jewelry

Understated elegance that connects consumers to people places and events with meaning in their lives

Wearable everyday

Quality craftsmanship & timeless designs



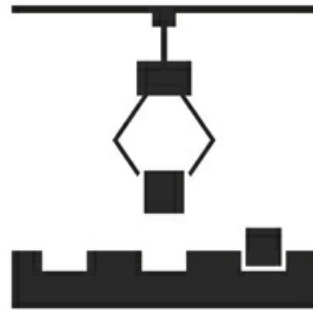
Reign Personalized Jewelry



Made to Order



Personalized engraving
as a design feature



Custom assembly of
unique blocks and pieces

REIGN

Popular Designs



REIGN

Marketing Programs



Affiliate

Commission based sales



Influencer

Celebrity promotion & gifting



Email

Personalized campaigns & promotions



Digital Advertising

Keyword purchases, sponsored ads



Events and PR

Publicity & media outreach



REIGN

Successful Marketing with Affiliates

\$45

Customer Acquisition
Cost

4.7X

Return on Customer
Acquisition Cost

\$212

Average Order Value

110%

ROI

Source: Q2 Pepperjam affiliate marketing report

COORDINATES[®]
COLLECTION

REIGN

Successful Marketing with Influencers

\$36

Customer Acquisition
Cost

4.2X

Return on Customer
Acquisition Cost

\$153

Average Order
Value

114%

ROI

Source: Two Week Influencer Campaign June 16th – 29th 2017

COORDINATES[®]
COLLECTION

REIGN

Influencers in Action



daniellagrace
Napa, California

Follow

daniellagrace No matter where I go, I always keep a piece of Barcelona, Tahoe & Maui with me. 🌟 Where's your favorite place? 🌍🌍🌍 #mycoordinates @coordinatescollection

use code: DANIELLAGRACE15 to get 15% off your custom bracelet

Load more comments

jamiellen Those bracelets are soo pretty!

cherryvanillapeppermint flying in from Kauai now, and I live in Tahoe! I feel ya babe, only left place to venture to is Barcelona

3ric4usa How long are you in Napa for?
carolineeisler wow looks amazing babe!! Enjoyy 😊😊



3,102 likes

MAY 3

REIGN

Successful E-mail Marketing

\$27

Customer Acquisition
Cost

9.9X

Return on Customer
Acquisition Cost

\$264

Average Order
Value

173%

ROI

Source: Company Customer Data January 10th - July 31st 2017

COORDINATES[®]
COLLECTION

REIGN

Sample E-mail Campaign

Legend Bracelet BOGO


COORDINATES[®]
COLLECTION

bracelets · necklaces · rings · more

One for You, One for Him

48 HOURS ONLY!

A LEGEND BRACELET
BOGO



Design two signature Legend bracelets and
get the 2nd on us with code:

ONEFORMOR

SHOP NOW >

REIGN

Media Coverage

THE
HUFFINGTON
POST

"The beloved blue stones, and colored gems in general, are in the midst of a resurgence, especially as engagement ring options"



"Think of the Coordinates Collection bracelet as a modern day answer to the locket"

WWWD

"Ethically sourced in Australia and made in L.A., Reign Sapphires targets Millennials with unconventional designs featuring blue gemstones"

VOGUE

"5 Pretty Pieces of Jewelry You Need to Snag by 30"

REIGN

Instagram Followers

15.6K

@REIGNSAPPHIRES

77.2K

@COORDINATES
COLLECTION

5.2K

@LEBLOCJEWELRY

REIGN

Facebook Followers

20.1K

@REIGNSAPPHIRES

26.5K

@COORDINATES
COLLECTION

REIGN

Virtual Retail Platform

Low Footprint Retail App + Virtual Point of Sale

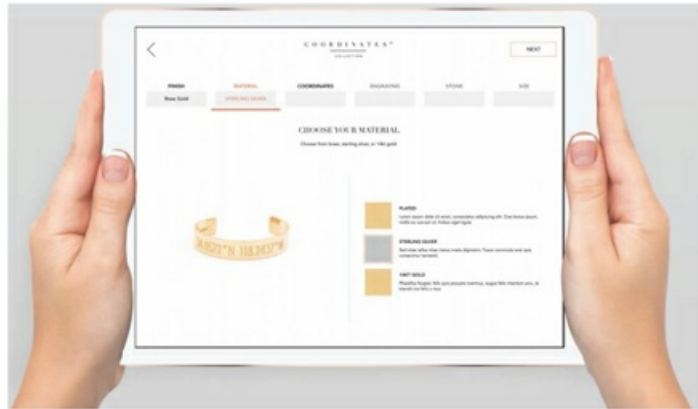
The future of retail located in high traffic locations

Display case of samples

iPad

Drop ship right to customers

No inventory, no high cost square footage, part time salespersons



REIGN

History – Just Getting Traction



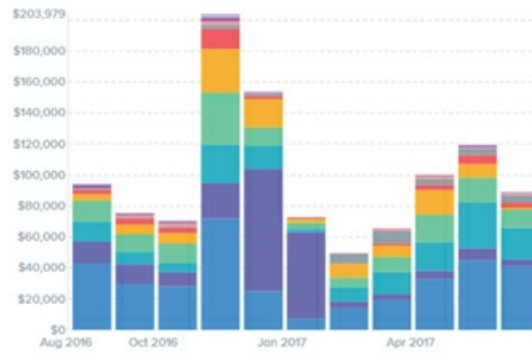
Data Driven

Key Performance Indicators

Financial Metrics – Revenue, Margin
Order Volume
Products Sold
Average Order Value
Site Visits
Traffic Source
Conversion Rate
New vs. Repeat Customers



Monthly Traffic Sources



Source: *Glew.io Revenue Analytics – August 1, 2016 – August 14, 2017*

REIGN



Summary

Reign's products are of certified origin, manufactured under guaranteed ethical and sustainable processes

True multi-channel sales funnel

Strong social media presence

Digital marketing initiatives showing positive ROI

Motivated management with large ownership position

REIGN
